

Fat Rabbit!



What you will need

50cm x 50cm main colour material

50cm x 30 cm contrasting material (may vary according to personal preference and adjustments to size of pattern pieces)

Polyfill or stuffing of choice

Embroidery thread for nose and feet

Eyes (plastic, glass or felt)

Pair of disposable chopsticks for stuffing (optional)

Pins, sewing machine and hand sewing needles, cotton.

Pattern notes

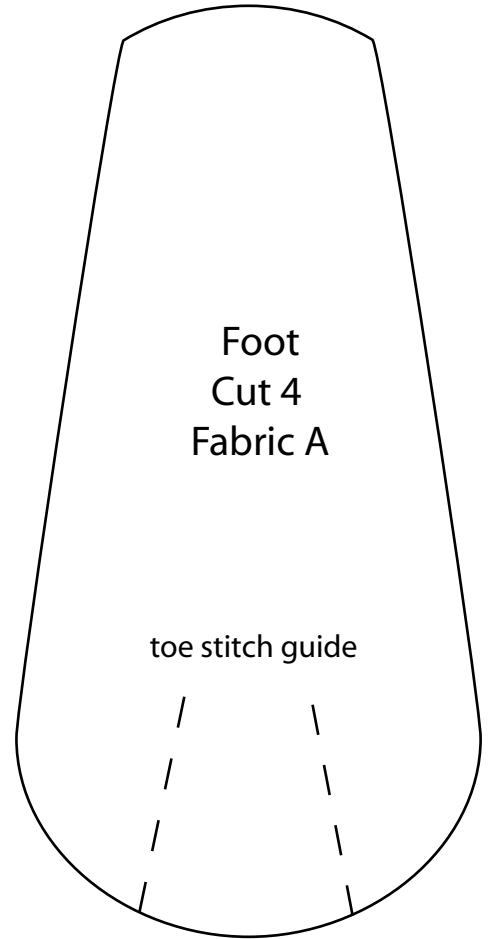
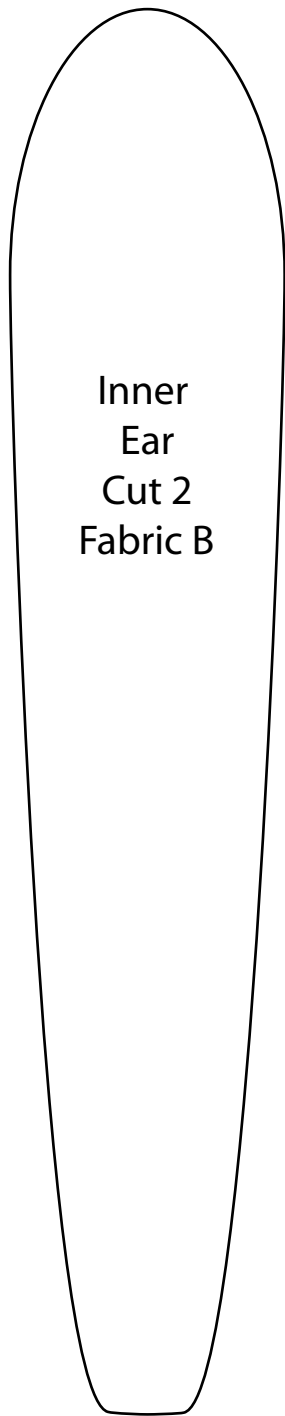
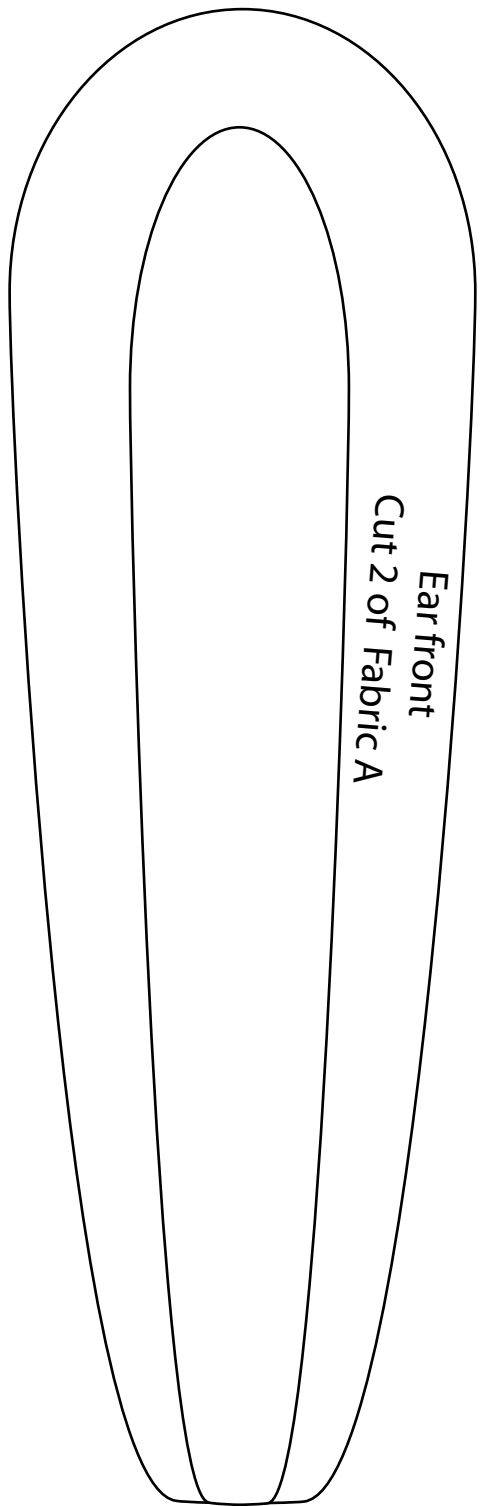
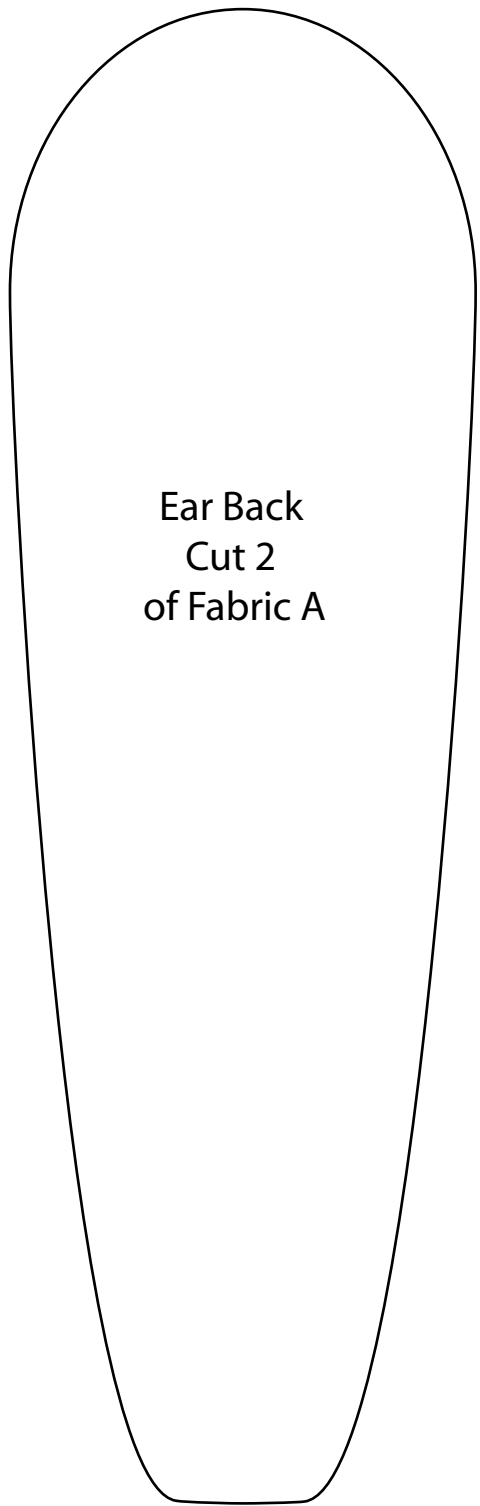
All pieces are created with a 3mm seam allowance.

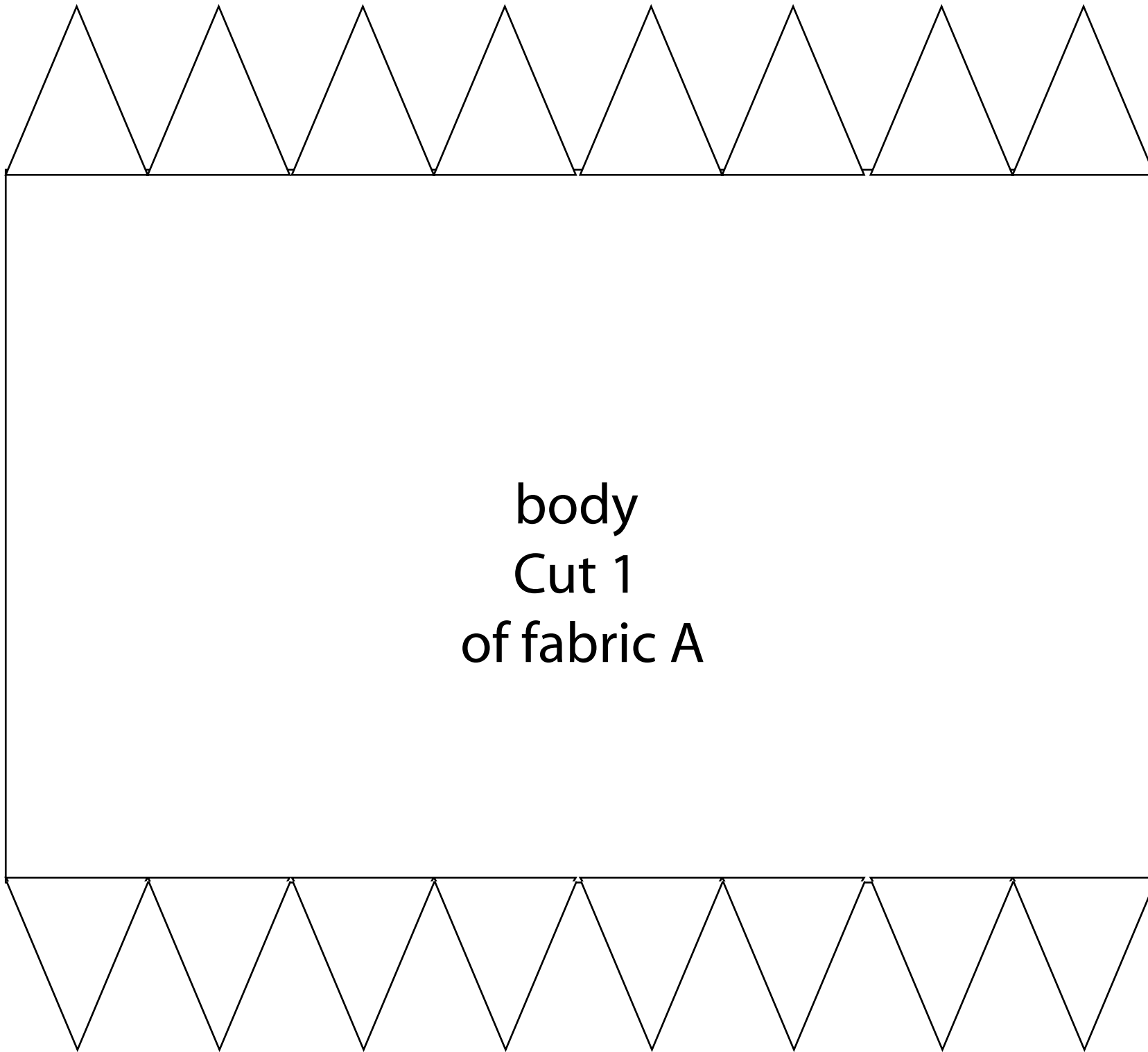
Pieces can be scaled on the photocopier to any size you are able to sew.

Any questions please email me janice.hook@gmail.com

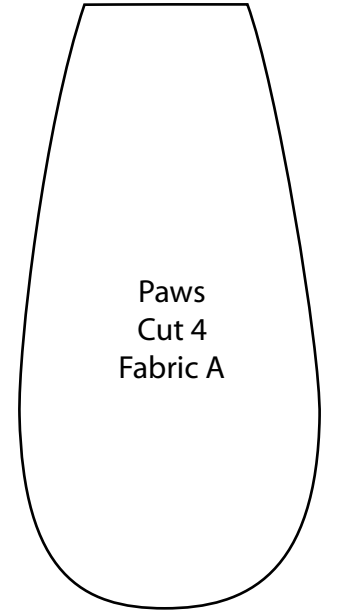
This Rabbit is intended as amusement for adults and not recommended as a toy for children.

The creator of the pattern is not liable for any injury caused by any results of or incurred in the making of this pattern.

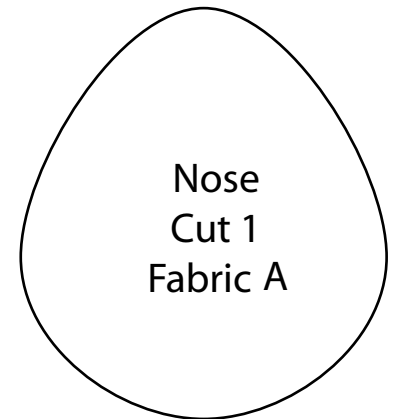




body
Cut 1
of fabric A



Paws
Cut 4
Fabric A



Nose
Cut 1
Fabric A

Step 1
Cut out all pattern pieces (note quantities). Contrasting fabric is recommended for Inner ear and optional for nose and 2x feet piece for bottom of the feet.

Step 2
Pin body piece as shown in fig.1 and sew each points to the next to form the cylinder shape as shown in fig. 2. The ends should resemble fig. 3

Step 3
Pin long edge of body as shown in fig.4 and sew about two thirds of the way along to almost close. (The rest you'll hand sew at the end)

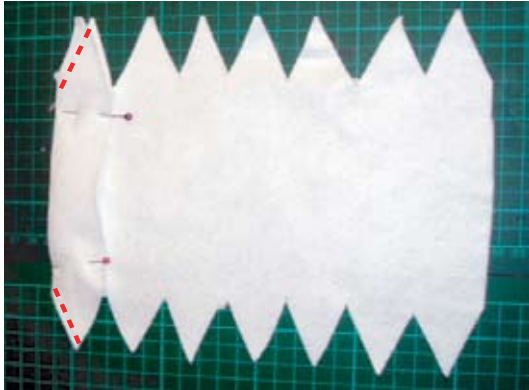


fig 1

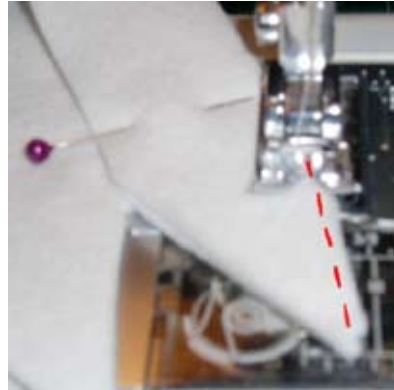


fig 2



fig 3



fig 4

Tip - old tailor's trick for saving thread
This process can use a lot of thread and leave you with lots of ends to trim. To save thread try the following method.

Take a scrap of fabric about an inch square, at the end of your line of stitching (after you've reversed or done your finishing stitches to stop unravelling) don't lift your presser foot, just feed in your scrap of fabric, sew off your pattern piece and on to the scrap then stop. Don't remove the scrap from under your foot, reach around the back of your machine and snip the thread between your piece of fabric and the scrap.

To resume sewing feed your pattern piece under the presser foot then remove the scrap for re use.

insert picture here



Step 4

Pin Ear Front to Inner ear right sides to gather as shown in fig 4, it's easiest to pin and sew one edge at a time (fig.5) to avoid the pins getting in the way as you sew. Clip the curves, open out and press to get a nice finish on the front of the fabric (fig.6)

fig. 4



fig. 5



fig. 6

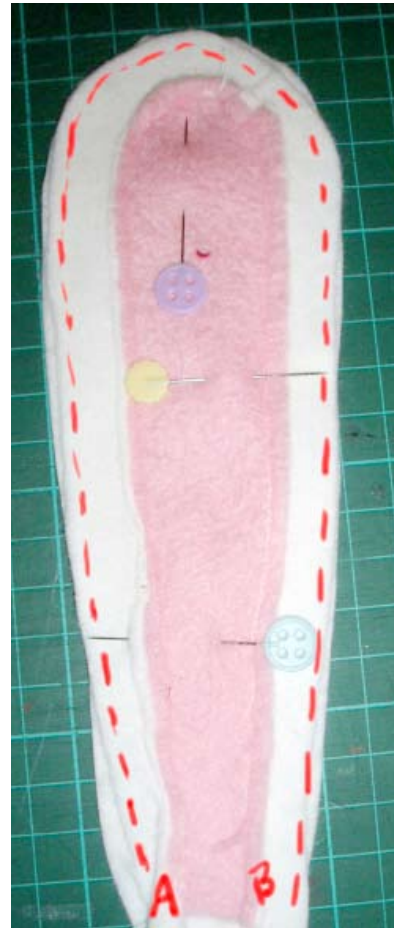


fig. 7

fig. 9



Step 5

Pin Ear Complete Ear Front to Ear Back right sides to gether as shown in fig 7 And sew from points A to B as shown.

Notch curves and trim ends as shown in figs. 8 & 9



fig. 8

Step 6

Pin 2 x paws right sides together and sew around edges from points A- to B leaving the end open for turning as shown in fig. 10. Repeat with second pair of paw pieces.

Step 7

Pin 2 x feet right sides together and sew around edges from points A- to B leaving the end open for turning as shown in fig. 11. Repeat with second pair of foot pieces.

Step 8

Hand sew nose piece around the edges as shown in fig. 12. Don't tie off your thread.

Place a ball of stuffing in the middle of the nose and pull loose thread end to gather as shown in fig. 14. (fig.15 - front view)

fig. 10



fig. 11

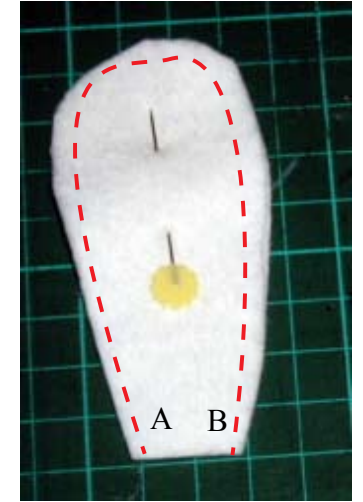


fig 12



fig 13

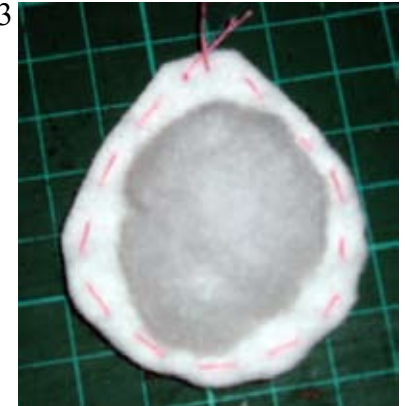


fig 14



fig 15



Step 9

All of your rabbit pieces should now be ready for stuffing and assembly (fig 16)

I recommend stuffing the body and marking your positions before removing the filling and inserting eyes and sewing on the nose.

A pair of disposable chopsticks taped together make a great stuffing stick (fig. 17).

After stuffing feet, paws and ears, fold in the ends of the pieces as shown in fig. 18 before attaching to the body to add rigidity and tidy up the ends.

fig 16



Step 10

Stuff ears lightly if you want them to stay floppy.

Step 11

Stuff feet and paws firmly for stability.

fig 17



fig 18

Step 12
Pin parts to body piece and mark attachment points.
Remove, and remove stuffing. (fig 19)

Step 13
Insert eyes according to manufacturers instructions

Step 14
Embroider nose piece and attach to body.
(fig. 20 & 21)

Step 15
Re-stuff and Sew body closed. (fig.22)

Step 16
Attach feet and hands to body (fig.23 demonstrates
recommended technique)

Step 17
Attach ears, if you want one to stand up I recom-
mend winding a tight tube of stuffing around your
chopsticks (fig 24) and stuffing into the base of the
ear. Also instead of sewing both edges of the ear to
the body at once work in more of an oval shape and
sew around the edges (fig. 25).

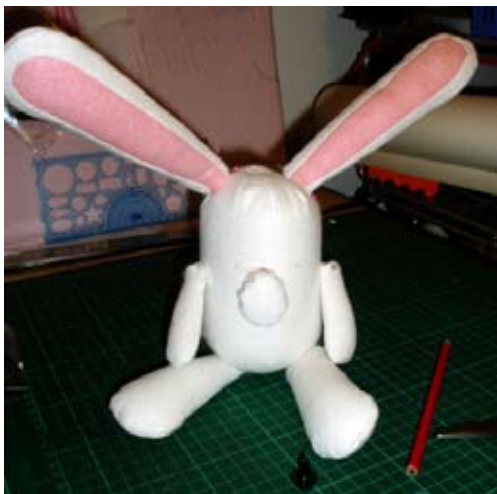


fig. 19



fig. 20



fig. 21



fig. 22



fig. 23



fig. 24



fig. 25

Step 18
Embroider toes as in fig. 26

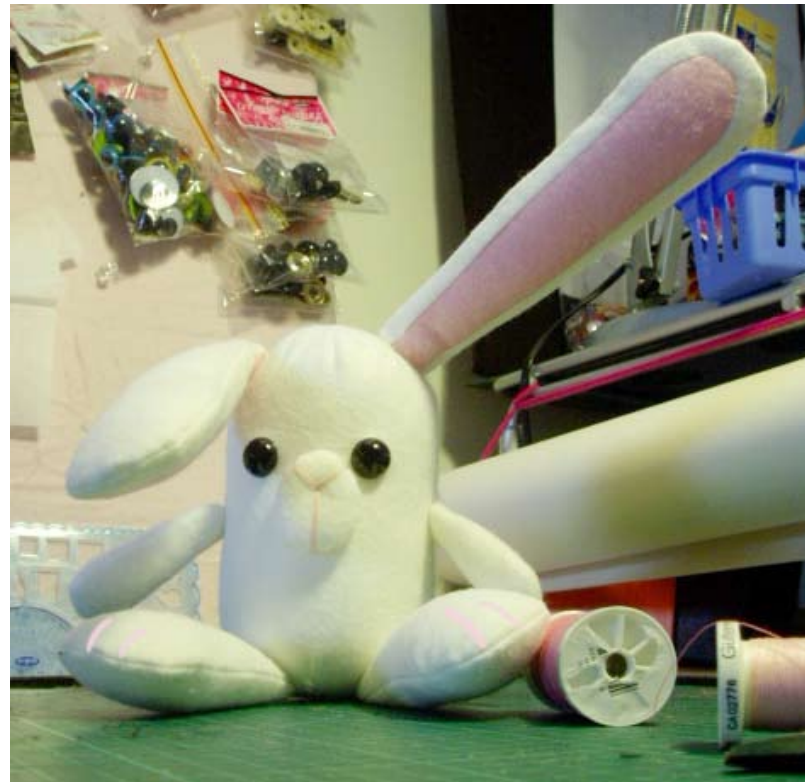


fig 26

Step 19
Attach tail as in fig. 27



fig 27



Finito!